



Animal Management in Rural and
Remote Indigenous Communities

Tackling Animal Management in Rural and Remote Indigenous Communities

**Dr. Brooke Rankmore
CEO AMRRIC**





Overview

Impacts of unmanaged populations

Ingredients of effective companion
animal management

AMRRICs work

Impact

Opportunities



Overpopulation

- “I just don’t want any more puppies. It’s not my choice she keeps having puppies. The boy dogs keep getting to her. I don’t want any more puppies. Too many.”
- Elderly lady, Maningrida 2016



Parasites



Zoonoses



Welfare



After:





Litter



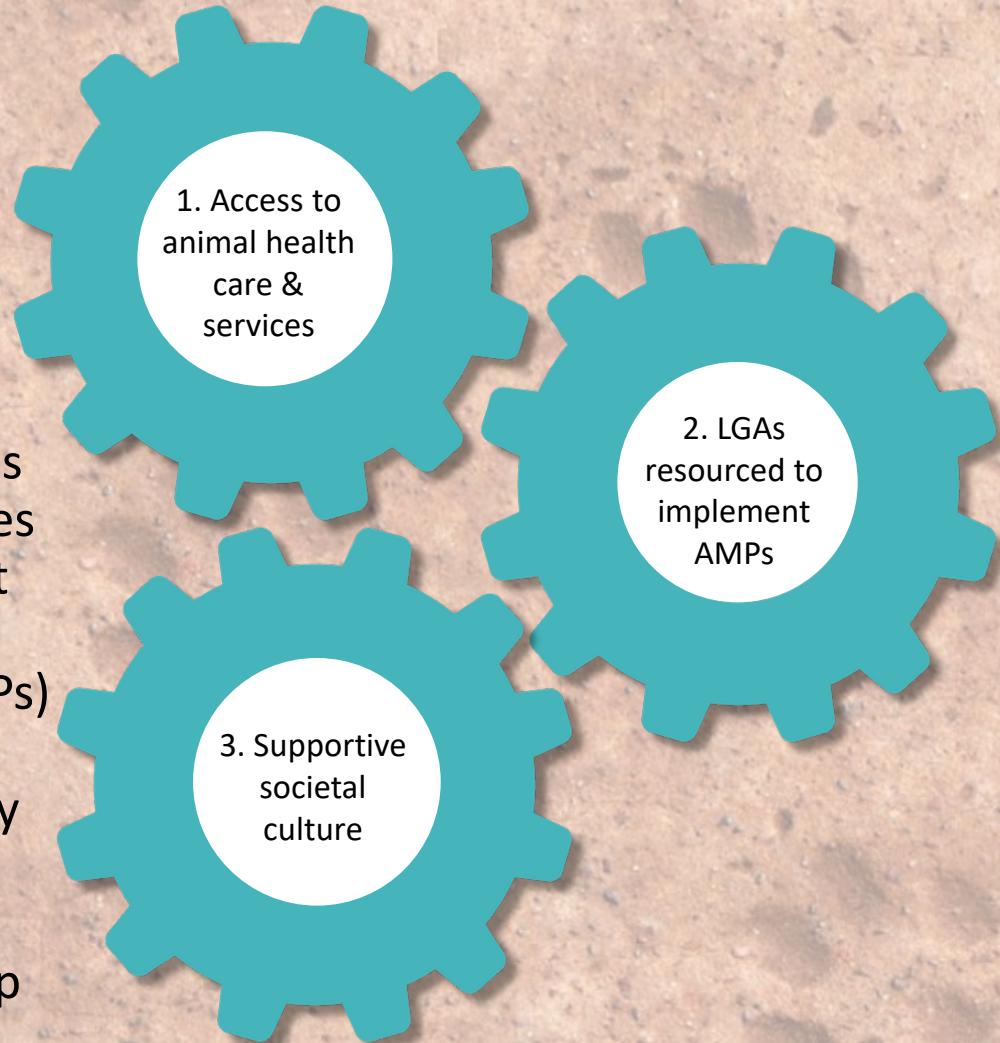
Nuisance






Key ingredients for effective companion animal management

1. Geographic and economic access to veterinary services, prophylactic treatments and animal care products
2. Local Government Authorities (LGAs) that have the resources and knowledge to implement appropriate Animal Management Programs (AMPs)
3. Societal culture that generally adheres to local by-laws and encourages the concept of responsible animal ownership





1. Access to
animal health
care &
services



2. LGAs
resourced to
implement
AMPs





3. Supportive societal culture



Benefits of effective animal management

- Improved animal health and welfare
- Improved human health and wellbeing
- Improved community amenity and safety
- Reduced negative impacts on wildlife and ecosystems
- Reduced biosecurity risks
- Enhanced empathy development

 amrric





Keys to AMRRIC's approach

1. Understanding and respecting peoples' connection to their animals
2. Working with all stakeholders to develop culturally appropriate tailored programs that meet the needs of the community as a whole
3. Building trust and implementing changes slowly, allowing people to personally recognise the benefits of participation

AMRRIC is a knowledge broker:

- For Local Government Authorities and animal management staff
- For veterinary service providers
- For stakeholders impacted by, or with an interest in remote community animal management
- For communities

AMRRIC is primarily funded to:


- Facilitate and co-ordinate animal health programs.
- Collaborate with LGA's and veterinary providers to support existing programs and facilitate programs where none exist.
- Support and facilitate community and school based education programs and resources that reinforce responsible pet ownership.
- Collate data on companion animal populations and management history



AMRRIC's area of work:

Assisting Local Government Authorities

- Deliver, co-ordinate and facilitate veterinary and education programs.
- Develop and assist with the implementation of animal management strategies and programs.
- Partner to secure funding for animal management programs.
- Advocating for increased resources
- Build local capacity and capability
- Connect with veterinary service providers
- Promote responsible pet ownership



AMRRIC's area of work:

Assisting Veterinary Service Providers

- Guidelines, resources and advice
- Linking with local government authorities and community contacts
- Facilitating mentor/mentee relationships
- Supplying vet and vet nurse volunteers for programs.

AMRRIC's area of work: Assisting stakeholders impacted by, or with an interest in remote community animal management:

- Providing advice and link with others stakeholders
- Promoting evidence-informed decision making
- Promote a culture of responsible animal ownership by providing veterinary and community education tools and resources to assist stakeholders as they implement animal management activities.
- Knowledge Broker
- Catalysing relationships



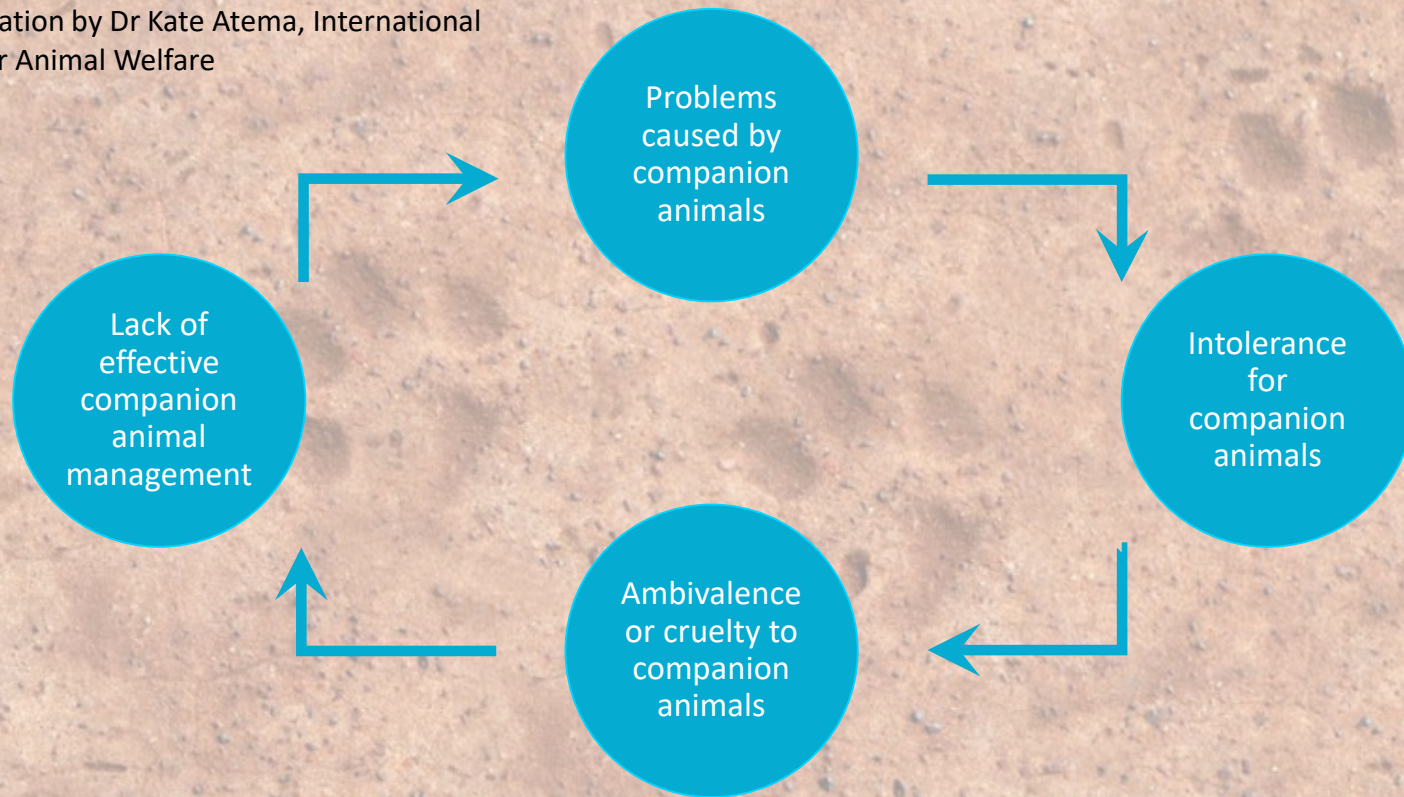
Impact





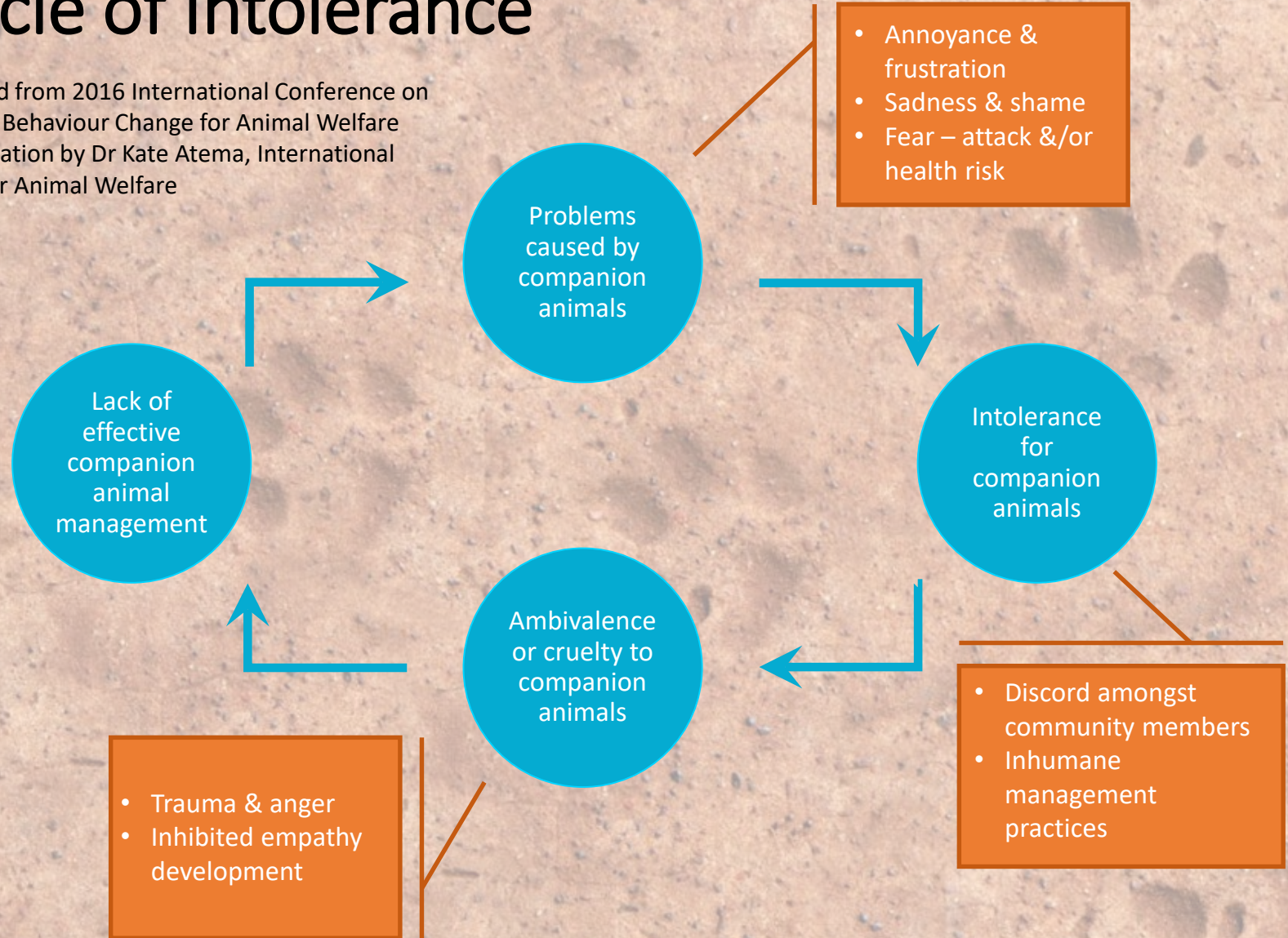
Cycle of Intolerance

Adapted from 2016 International Conference on Human Behaviour Change for Animal Welfare presentation by Dr Kate Atema, International Fund for Animal Welfare



Cycle of Intolerance

Adapted from 2016 International Conference on Human Behaviour Change for Animal Welfare presentation by Dr Kate Atema, International Fund for Animal Welfare







Education

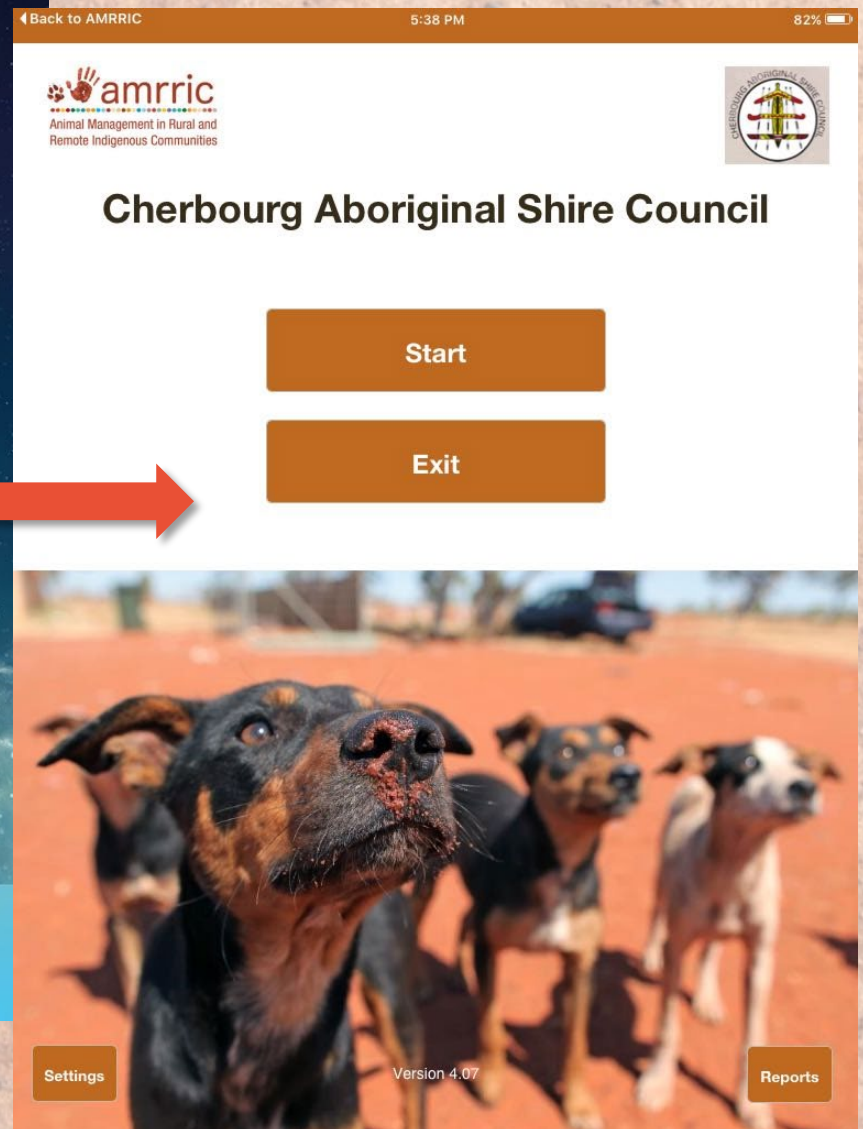
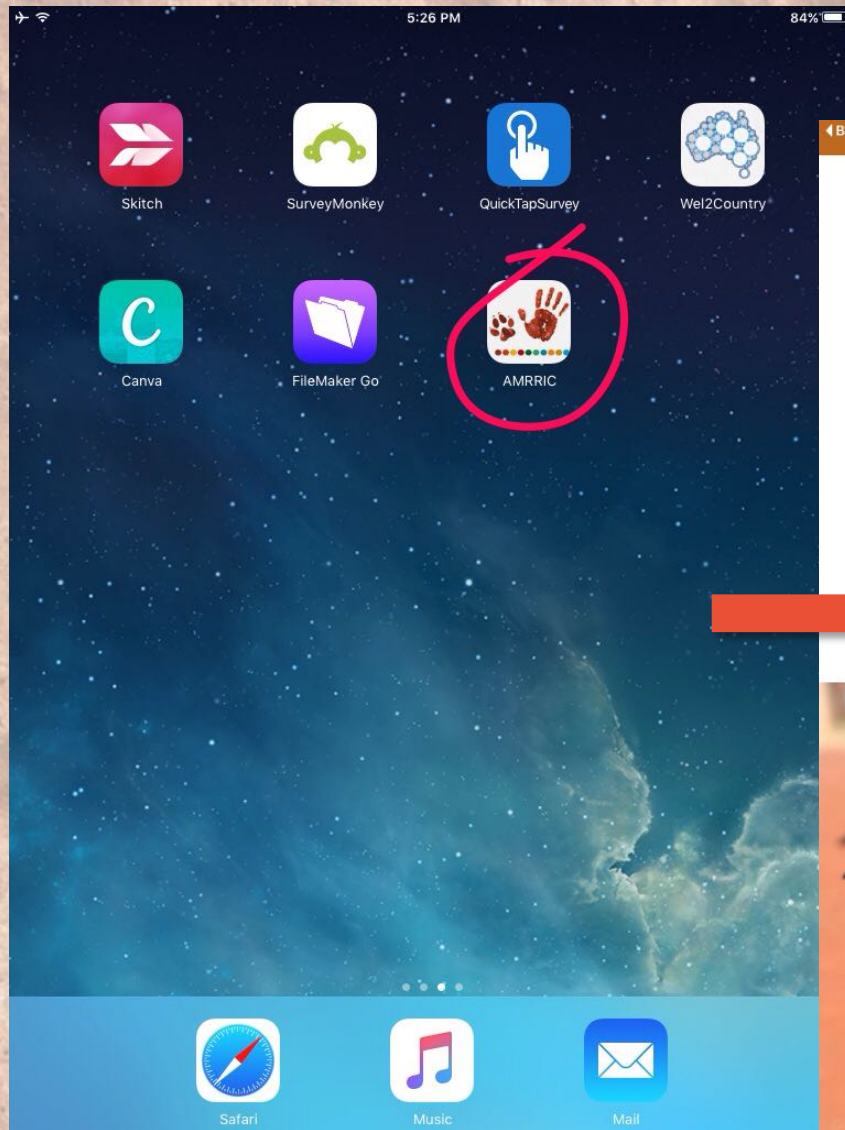








Building Capacity – Animal Management Workers



The AMRRIC App













www.amrric.org | ceo@amrric.org



FOLLOW US ON
facebook